

# SUB-2025.1-010 Figures

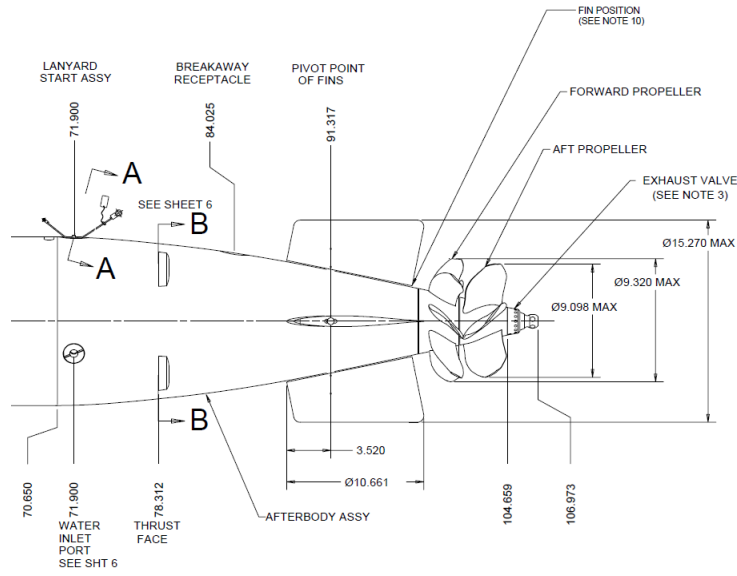


Figure 1: Mk54 Overview Diagram for Background Knowledge

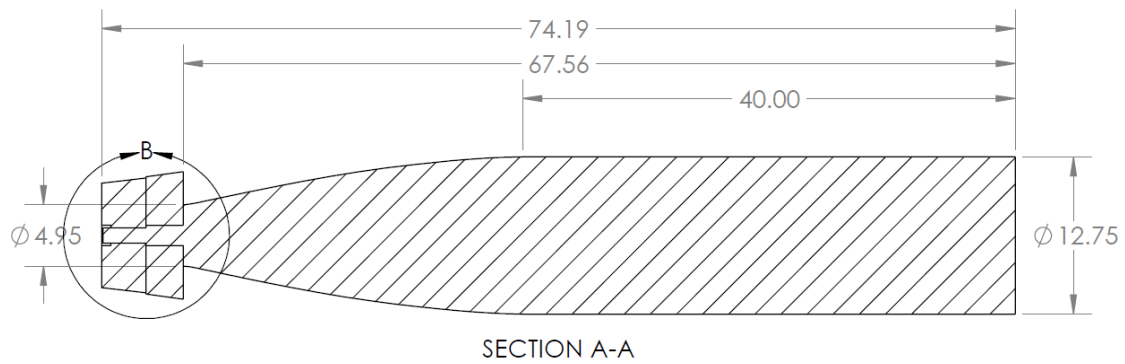


Figure 2: Mk54 Streamline ICD with Overall dimensions

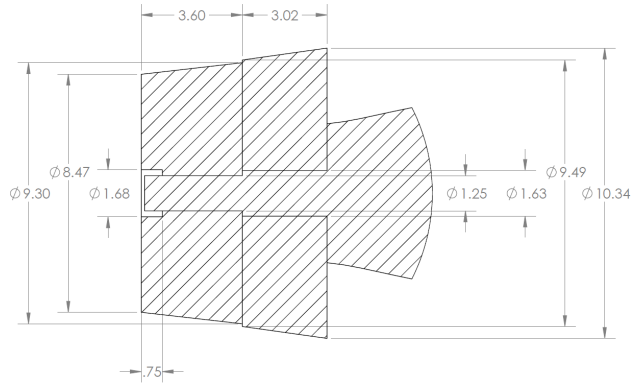


Figure 3: Detail View of Mk54 Torpedo Propeller Design Space

INVOLUTE SPLINE DATA SAE ANSI B92.1 FLAT ROOT SIDE FIT (M103)		INVOLUTE SPLINE DATA SAE ANSI B92.1 FLAT ROOT SIDE FIT (M103)	
DIAMETRAL PITCH	16/32	DIAMETRAL PITCH	16/32
PRESSURE ANGLE	30°	PRESSURE ANGLE	30°
NO. OF TEETH	25	NO. OF TEETH	19
PITCH DIA REF	1.5625	PITCH DIA REF	1.1875
BASE DIA	1.3532	BASE DIA	1.0284
MAJOR DIA	1.625 <sup>+0.011</sup> <sub>-.000</sub>	MAJOR DIA	1.250 <sup>+0.011</sup> <sub>-.000</sub>
MINOR DIA <span style="border: 1px solid black; padding: 0 2px;">-A-</span>	1.500 <sup>+0.002</sup> <sub>-.000</sub>	MINOR DIA <span style="border: 1px solid black; padding: 0 2px;">-A-</span>	1.125 <sup>+0.002</sup> <sub>-.000</sub>
SPACE WIDTH MAX, ACTUAL	.1011	SPACE WIDTH MAX ACTUAL	.1010
SPACE WIDTH MIN, EFFECTIVE	.0982	SPACE WIDTH MIN EFFECTIVE	.0982
TIF DIA (FORM DIA) MAX	1.6125	TIF DIA (FORM DIA) MAX	1.2375
PIN DIA	.108	PIN DIA	.108
MAX MEASUREMENT BETWEEN TWO PINS	1.4088	MAX MEASUREMENT BETWEEN TWO PINS	1.0319
MATING PART NO.	1568885	MATING PART NO.	1568886

Figure 4: Mk54 Spline Details for FWD and AFT Propellers